

# P A R C NEWSLETTER

PUKAHU AND HAWKES BAY ADULT RIDING CLUB

AUGUST 2012

**New season,  
new people.  
Meet your new  
committee.**

## Ask the Vet

New column! Ask your local vet Sally a question that's been niggling you each month, and she'll endeavor to answer it for you in the next newsletter. Meet Sally on Page 3.

## Pukahu Show

Don't forget to get your memberships in by 5th Sept to be eligible to enter the Pukahu Show ARC classes! There's a Champion rug up for grabs for both the flat class and the SH class, as well as Reserve Champ prizes. Thank you to Saddlery Warehouse, Steed Health and B&W Sporthorses for sponsoring these classes.

## ***In this issue:***

- ➔ **Meet your new committee**
- ➔ **Brand new Ask the Vet column**
- ➔ **Upcoming Events**
- ➔ **Classifieds**

## **MEMBERSHIPS DUE!**

JOIN OUR CLUB BY 5th SEPTEMBER TO BE ELIGIBLE TO ENTER PUKAHU COMBINED SPORTS ARC CLASSES ON 15th-16th SEPTEMBER.



# PARC NEWSLETTER

## Contact PARC Secretary



Contact club Secretary Kristin Baylis on (06) 8436090 or [email](#) for any club queries unrelated to memberships.

## PARC Memberships DUE!!

New memberships & renewals are now being taken for the 2012-2013 season. Contact Treasurer Sharon Goldsworthy via [club email](#) with any queries.

## Newsletter Contributions

Please contact us via [club email](#) for any additions and contributions to the newsletter such as saddles or horses for sale, services offered, etc. Remember this is for club members only. Non-members can pay a fee of \$5 to advertise with our club via bank deposit.

## September/Oct Calendar

**Combined Sports** - 9th Sept

**Pukahu Show** - 15-16th Sept

**Poraiti Dressage Ribbon Day** - 29th Sept

**Reins SJ Clinic** - 3-4th Oct

**EventingHB 2DE** - 13-14th Oct

*View full calendar on Page 10 for more*

## PARC Wordpress website

Visit the [PARC Website](#) which is always updated with the latest entry forms, competition dates and articles.

## Find us on Facebook!



[PARC is on Facebook!](#)

It is updated daily with events, photos, and more.



My own personal lake, as the Clive river spilled over into my paddocks. Chooice.

## New committee, new faces, new season!

Whew! There hasn't been a newsletter for a couple months, so I must apologise. Hopefully everyone has survived the endless rain and flooding, and is looking forward to a dry (not drought-stricken) summer. I can finally start to see the light at the end of it all - spring is starting to make a slow appearance and all those exciting shows and events are popping up around the place!

But first, we must introduce you to our brand new committee - almost entirely made up of fantastic new faces. Your President is now the delightful Melinda Turner; your Vice-President is the one and only Sally Cockerill-Newall; your Treasurer is the amazing Sharon Goldsworthy, and I'm still here to fill out the last place of office as Secretary. The rest of your amazing committee is littered with shining examples of PARC - we have Cyree Hunt, Cristie Shotter, Kirsty Bjornberg, Michelle Hand and Chelsea Richards.

It is a pretty fantastic line up, and I'm sure many of the names are familiar to most of you - but if not, never fear, we've collected photos and short bios for you, so you can identify

them in the field and at shows ;o) Thank you so much to all you lovely ladies for volunteering to help run the club. It will be excellent to have fresh ideas and fresh perspective.

Back to the membership side of things...as most of you well know, membership renewals are now due. You can download a form from our website or Facebook page, and look out for copies at your local saddlery. This year we are introducing membership cards for all our members, so you have proof of your membership. Thanks to Easy Print for kindly supplying these free of charge - please support their business in return.

If you wish to compete in the ARC classes at Pukahu Show, you must have your memberships in by the 5th September, so that we can get your membership cards to you in time. Proof of membership will be checked upon ring entry just like it was last year. And remember - it is a requirement of your membership to help out at Pukahu Show :o)



**Melinda Turner**  
President



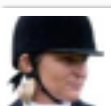
**Sally-Cockerill-Newall**  
Vice President



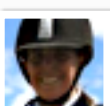
**Chelsea Richards**  
Committee Member



**Kristin Baylis**  
Secretary



**Cyree Hunt**  
Committee Member



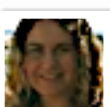
**Michelle Hand**  
Committee Member



**Sharon Goldsworthy**  
Treasurer



**Kirsty Bjornberg**  
Committee Member



**Cristie Shotter**  
Committee Member

## Club Sponsors



[Steed Health](#)



[The Hobby Horse](#)



[Saddlery Warehouse](#)  
HASTINGS



[Kampic Photography](#)



[Easy Print](#)

# PARC NEWS

**NEW  
COLUMN**



## NEW! Ask The Vet Column

We're excited to tell you that your new Vice-President is local vet Sally Cockerill-Newall, and she has agreed to hold an Ask the Vet column each month. So start thinking up those questions you always wanted to ask, and send them in to the club [email](#) or ask on [Facebook](#) with the title 'Ask The Vet:...' - the first one will be in the next newsletter.

## PARC Memberships Due

Membership fees are now due for the 2012-13 year. You can download a form from our [Wordpress Site](#) or [Facebook Page](#), and look out for copies at your local saddlery.

This year we are introducing membership cards for all members, so you have proof of your membership. Thanks to Easy Print for kindly supplying these free of charge – please support their business in return.

If you wish to compete in the ARC classes at Pukahu Show, you must have your memberships in by the 5th September, so that we can get your cards to you in time. Proof of membership will be checked upon ring entry just like it was last year.

And remember - it is a requirement of your membership to help out at Pukahu Show.

## Pukahu Show Sponsorship

You are very lucky indeed that we have great sponsors! Saddlery Warehouse, Hastings has donated the Champion rug for the flat class, and PARC are getting it embroidered. B&W Sport Horses are donating the Champion rug for the Show Hunter class, and Steed Health are supplying a saddle blanket each for our two Reserve Champs. Please support our sponsors, and consider writing a thank you letter if you are a winner.

## Kampic Sponsorship Deal!

We are very, very excited to announce that Kampic is going to be offering PARC members a standing discount on photos they take of you and your horses at events.



We will provide more information on this as we work together with Kerry Marshall from Kampic to sort out all the details. Please support Kampic!

## Home Made Fly Repellent

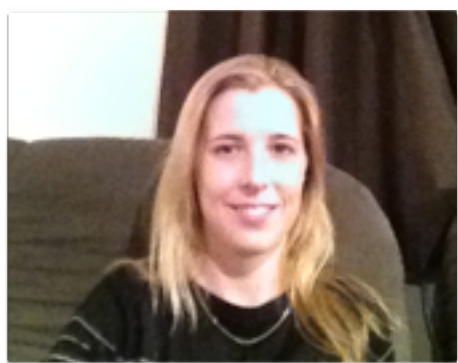
- 3 caps (approximately 60ml) of Dettol disinfectant
- 250ml Avon "skin so soft" bath oil
- 10 drops each of: Citronella, Lavender, Eucalyptus and Tea-Tree oil



Measure into a 1L spray bottle, and make up with water or cold tea. Shake well before spraying and give a quick shake after every few squirts to make sure the oil is mixed with the water. Spray on twice a day using enough to leave a fine mist on the coat.

# MEET THE COMMITTEE

We have formulated some photos and little bios for each new committee members so you can get to know them and recognise them out and about. We hope to make ourselves approachable and easy to talk to :o)



## President Melinda Turner

Hi Everyone, I'm the new PARC president for the 2012 season, I'm looking forward to helping out with the many events we'll be planning for the club over the next year. Originally from Napier I spent 12 years in the UK where I attended equine college and sat my British Horse Society teaching exams before returning to NZ to complete my studies in equine, animal and agricultural sciences. I work full time as a field representative for Hatuma Dicalcic Phosphate but when I'm not working I spend most of my time with my three horses, two of which are in work and hopefully will be regulars in all the up and coming shows.



## Vice-President Sally Cockerill-Newall

Originally from North Yorkshire, I grew up on my parent's thoroughbred stud and have been involved with racing and eventing in the UK. I qualified as a veterinarian from Liverpool University in 2008, before moving to New Zealand to marry the kiwi I had fallen for during his OE! After completing a one year equine internship at Canterbury Equine Clinic in the South Island, I moved up to Hawke's Bay. Now working at Veterinary Associates in Hastings, I have a special interest in equine work, particularly equine dentistry. My husband Nathan and I have a gorgeous little boy called Charlie and we live on our own beef and sheep farm in Patoka. I'm looking forward to meeting members of the riding club and getting back into eventing on my big ginger beast "Froogly"!



## Secretary Kristin Baylis

I'm Australian but have been sort of hybridly adapted to being part Kiwi ;o) (with not one Australian around to talk to, it was bound to happen). I'm from Adelaide in SA but moved here 6 years ago. Where I lived in Aus didn't really have horses, so my addiction was sadly unfulfilled. Imagine my childlike delight when I moved here and found horses galore. Jeez it's like a dream come true - and with this stunning NZ country side..! I have 2 horses; my big cheeky nearly 5yo appy Ronan who keeps me on my toes (or off them when he treads on them) and my young, sweet 2yo Flynny who is already towering over everyone. Finally, most people know I was in a car accident 2yrs ago that left me with a pretty bad head injury, and am still recovering from it. You will always see me out and about with my back protector, hit-air vest and a helmet - head injuries suck, so make sure you wear a helmet, too! ;o)



# MEET THE COMMITTEE

We have formulated some photos and little bios for each new committee members so you can get to know them and recognise them out and about. We hope to make ourselves approachable and easy to talk to :o)



## Treasurer/Memberships Sharon Goldsworthy

I'm originally from Taranaki, but moved to the East Coast as soon as I could. Hastings has been home for 7 years now and since I've been here, I've got back into horses. Max is my current horse, a ten year old Takapau warmblood, and I'm working on making him a good all rounder so we can have a go at anything. In my dreams we will be eventing, but only time will tell on that.



## Committee Member Kirsty Bjornberg (Symon)

Born in the Hawkes Bay, and have been riding over 20 years in various disciplines. I moved over to America in 2007 and started teaching learners the basics, and rode western and western hunters. I also made a trip to the UK and had some fantastic dressage lessons from some top instructors. I now have a beautiful 3yo daughter and have found a wonderful horse Blue. Blue and I are competing in eventing and show hunter this coming season. Chances are if there is a practice day or competition involving jumping, I will be there!



## Committee Member Chelsea Richards

Born and bred in the Mighty Hawkes Bay. I've been riding since I was nine. I was a high goal polo groom for five years in New Zealand, Australia and the UK, and am currently a member of the Hawkes Bay Polo Club. I also started eventing again after the polo season was cut short. I'm enjoying getting out there again on my cute gelding Sonny, and am looking forward to seeing you all out there as well :)

# MEET THE COMMITTEE

We have formulated some photos and little bios for each new committee members so you can get to know them and recognise them out and about. We hope to make ourselves approachable and easy to talk to :o)



## Committee Member **Cyree Hunt**

Hi, my name is Cyree Hunt and I am one of the general committee members this year. I grew up on a high country station near Hammer Spring, where I had thousands of acres of huge paddocks (fewer gates) and awesome hills to ride over. Boy I miss that! I did pony club, eventing, shows, hunting, etc and even a bit of polocrosse. Basically if it involved a horse, I'd give it a go. Years later, I'm still as obsessed with horses, only with family, age and a few serious injuries, I am a lot less courageous. I will try to serve you all well as a committee member this year!



## Committee Member **Cristie Shotter**

I have lived in Hastings my whole life and since the word to, it was horses. I was a member at Flaxmere PC through 2004-2006. I attended many pony club shows and a handful of A&P shows. I haven't done many since I finished on ponies. I bought a neat horse late last year who I am planning on bringing out as much as I can starting this season. I am interested mainly in dressage, as I lost my confidence jumping a few years ago. I am slowly getting my confidence back with my new horse because she loves jumping! I hope to get out and do a little bit of jumping this season too. I aim to get out there and give it a go and most of all have fun I look forward to this season and meeting all of our members.



## Committee Member **Michelle Hand**

I've just moved back down to the Hawkes Bay from Auckland to work in an ECE centre in Hastings. I have been a keen member of Te Atatu pony club in Weest Auckland since I was 14. I have done a bit of everything riding wise, and whilst at the pony club I have had a variety of different jobs on the committee. I own one horse who I broke in and I'm hoping to get her out and about this season to do a bit of everything. If you have any questions, concerns or just would like to chat, please come and see me (I don't think I bite!) I look forward to getting to know you guys this season, and am hoping that we all have a great season together.

# OUT AND ABOUT



## Andrew McLean 2012 Clinics

World-renowned equine behaviourist Andrew McLean shows how we can improve our training if we fully understand how the horse learns. I'm pleased to announce Andrew is back in New Zealand in September! Please get your registration form in ASAP if you'd like to ride. Spectators can register right up to the clinic as well as on the day.

### Format

**Day 1** features a 2-hour seminar followed by 4 in-hand and ridden demonstrations. Andrew will be hands on working with the horses and riders, and explaining the AEBC system as he goes.

**Day 2** features up to 8 individual 45 minute lessons. Most of the day 1 horses will have lessons as well as some new horses with different training challenges.

You can attend one or both days.

### Lesson/Demo Horses

We are taking applications for rider and lesson spots now (please apply by end of August). Day 1 demo spots are free, and day 2 lessons are \$190 each (plus any yard fees). We're looking for both groundwork and ridden demo horses – both "problem" and other horses.

### Spectators

Spectators: The cost is \$80 per day for adults and children pay half price. You can register by:

- completing a registration form on [www.aebc.com.au/nz](http://www.aebc.com.au/nz)
- coming along on the day (please arrive early so we can process your registration).

### When and Where

Wellington 24-25 September

Thompsons Horse Centre, Leonards Road, Mangaroa Valley, Upper Hutt

Coordinator: Bridget Dougherty email [bridget@horse-power.co.nz](mailto:bridget@horse-power.co.nz)

9am to 5pm (Monday), 9am to 4pm (Tuesday)

\*\* bring a chair \*\*

### To Register & Costs

All the information you need to register as a spectator or demo/lesson rider is on AEBC's website:

[www.aebc.com.au/nz](http://www.aebc.com.au/nz)



Andrew McLean dealing with the Thoroughbred panic attack!



# AUGUST ARTICLE



## Abscesses

by Sharon Goldsworthy

Wet weather is often accompanied by a worrying increase in the number of hoof abscesses in our horses. These can be caused by various issues, including foreign objects getting into the white line, trauma like a bruise to the sole, or cracks in the hoof wall that allow dirt and bacteria into the hoof. Standing in wet mud will soften the sole and so the risk of an abscess is increased.

Whatever the reason, an infection follows, which is incredibly painful to the horse due to the internal pressure in the rigid hoof.

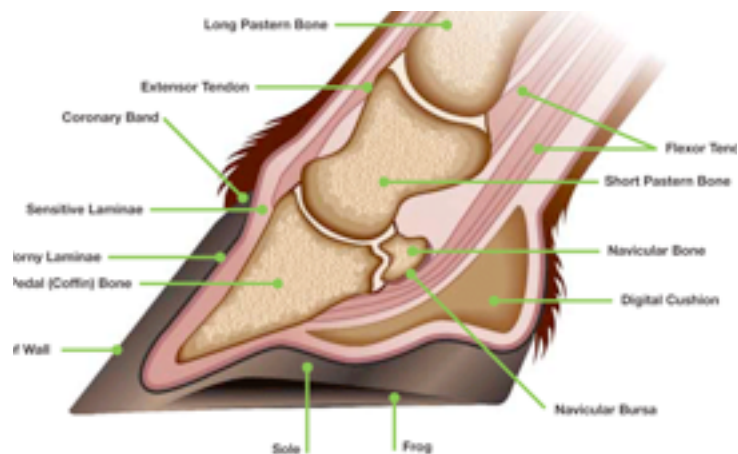
Abscesses can arise very quickly, even overnight. The horse can go from being sound to ten out of ten lame, and look so bad you might think they have broken a leg. There may also be heat and swelling in the leg, and sometimes even a strong digital pulse. Diagnosis is through finding the source of pain in the hoof, usually using hoof testers. The response from the horse is definite and immediate, and they can pull back, so be ready for a reaction.

Abscesses can be treated by a vet but generally a farrier will have much better knowledge of hoof anatomy. Once located, the abscess can be opened with a hoof knife, and as the infection and pressure is released, the horse will be much more comfortable. Some pain relief such as Bute or Devil's Claw will help in the early stages but should not be needed for long.

Antibiotics are not used as they don't work well on hooves due to the poor blood circulation there. They can also suppress the infection which can cause further problems with walled-off infections called sequestrations. Tetanus may be a concern, so check with your vet if your horse requires a booster.

After the abscess is drained, poultice the hoof to draw out any remaining infection. A warm Animalintex dressing is ideal, or the old fashioned poultice is a thick mixture of bran, Epsom salts and warm water. Bandage thoroughly – I use a disposable nappy to wrap the hoof – then cover with Vetwrap or similar.

A horse will tend to wear through this fairly quickly, so covering the bandage with a home-made boot of tyre tube will keep the hoof dry and out of the mud. Then wrap a layer of Duct tape around the top of the hoof (below the hairline) to help hold everything on. Replace as necessary, and when changing, use some iodine to harden up the exposed sole. It should be resolved within 10 days but may take a month to fully heal.



Prevention is the best option – ensure your horse is regularly trimmed or shod so that the hooves are in good condition. Correct trimming will balance the hoof and reduce any stresses that may cause cracks or separation of the white line. A strong, healthy sole-wall junction will resist any penetration by debris or foreign objects. Pick your horse's hooves out regularly, try to keep them out of mud and give them somewhere dry to stand for at least part of the day. ■



# CLASSIFIEDS

## RDA SADDLES FOR SALE:

Near new A6 All Purpose Tekna saddle 18" med gullet, synthetic saddle w/ flock wool/latex fill. Unmounted, only for sale as doesn't fit current horses. \$850 ono.

Near new A8 Dressage Tekna saddle 17.5" suede seat, self-adjusting back girth strap, MW gullet taken to its widest setting. Synthetic with wool flock/latex fill, removable knee blocks. Unmounted \$950 ono.

Contact Hastings Group RDA (06) 876 9498

## HAVING PROBLEMS?

Need help with starting your young horse or handling a problem horse, or having floating difficulties? Call Jude Roberts on 06 844 9858 or 0211815911

## FREE TB 6yo MARE:

Free 6yo bay TB mare, 15.1hh. Sadly owner has gone into rest home, and property sold so needs new home. Very sweet, kind nature but can be timid with new people. Once she knows you she is a darling to handle, has never put her ears back, no kick or bite. Stands well tied, good to shoe and float. Was very well broken in and pre-trained at Lime Country TB's but never trialled or raced. Been back from trainer and turned out for 6 months. Prefers to be on her own or with kind paddock mate as she is a softie and has been bullied before. Comes with winter and summer covers. Will go to suitable home only. Phone Viv for more info or questions on (06)8786846 or 0211808868

## SADDLE FOR SALE:

17.5" English Feildhouse VSD GP med wide, Havana Brown, beautiful saddle used for Saddle Hunter Classes \$1800 can be viewed and trialed at Hobby Horse or call Nikki on 0272355703

## DOUBLE FLOAT:

Double float, braked. Price dropped as we've bought a truck. Now only \$4000. We've been hiring it out, so handy spare float to own and make some extra pocket money. New disc brakes, new rims and 5 new tyres. New LED lights and metal plating around the front to make it look flash and pretty! Very easy to tow. Contact Shani or Darren on (06) 875 1050 or 0210450084

## SADDLES FOR SALE:

Black Country Vinici Jump saddle, CC, mono clap, exc condition, little use. Approx 1yo, med tree, 17.5" suit TB back, black, wool flocked \$2500

Black Country Clinici Jump saddle, MW tree 17.5", approx 5-6yo, brown, v good cond, mono flap, wool flocked.

Contact Tanya (06)8788787 or 021781171 for photos or more info on these gorgeous saddles.

Visit [www.Kampic.com](http://www.Kampic.com) for all your equestrian photos - digital and prints are available on request.

Got something to advertise? You can put it right here. Free for all PARC members, and \$5 for all non-members. [Email us here.](#)

## CROSSBRED

## YOUNGSTERS FOR SALE

Chrialka Stud is offering weanlings to 5 year olds, EMH 15.3hh and up. Contact Liz Nelson on 06 8742805 or email [chrialka@xtra.co.nz](mailto:chrialka@xtra.co.nz)

## REKOHU EQUESTRIAN:

All weather arena, jumps and training track hire. Stabling and grazing agistment facility. DIY or part/full livery. Located close to Taradale. Ph/TXT Sarah on 027 3242 021

## WAISTCOATS FOR SALE:



Waistcoats for sale, made to order, any colour or size. Adults \$90-95 and children \$55-65. You can choose your own buttons, lining, piping, etc

if you like, and we can try to match your browband the best we can. Please call Diane on 06 8587266 or 0274317881 or [email here.](#)

## Club shirts and jackets available at Hobby Horse

Go to Hobby Horse (St Georges Rd, Hastings) for our PARC uniforms. Sarah will have a list of prices available and a range of sizes for you to try. Call them on (06)8772123 or [visit their Facebook Page.](#)

## Advertise horses on our Facebook Page

Members free, non-members \$5, bank details will be provided. Contact us via [email.](#)

# UPCOMING EVENTS

For everything listed below, you can download the entry forms or fliers on our website if they are available: [PARC Website, Downloads Page](#). You can also let us know if you're coming to one of our events on our Facebook page: [PARC Facebook Page](#).

| Year | Month            | Date                   | What's Happening  |
|------|------------------|------------------------|---|
|      | <b>September</b> | <b>1st</b>             | Twin City ARC Show Hunter Practice Day, Euchre Flat                     |
|      |                  | <b>2nd</b>             | 2012 Pleasure Horse Winter Show Series, Tielcey Park                    |
|      |                  | <b>2nd</b>             | Pre-Season Mini Show at Papakura Domain, Meeanee, Napier                |
|      |                  | <b>2nd</b>             | CHB PC Spring Show Jumping Competition, Arran Station                   |
|      |                  | <b>9th</b>             | Combined Open Sports, Equestrian Park                                   |
|      |                  | <b>15th-16th</b>       | <b>Pukahu Show - PARC members, as part of membership, must help out</b> |
|      |                  | <b>29th</b>            | Poraiti PC Dressage Ribbon Day, Papakura Domain, Meeanee, Napier        |
|      | <b>October</b>   | <b>3-4th</b>           | Reins Showjumping Clinic with Amy Roydhouse                             |
|      |                  | <b>13-14th</b>         | Eventing Hawkes Bay 2-Day Event   |
|      |                  | <b>17-19th</b>         | Hawkes Bay A&P Show   |
|      |                  | <b>20th &amp; 23rd</b> | Blyth Tait Course   |
|      |                  | <b>21st</b>            | <b>PARC Dressage Jumping Day</b>  |
|      |                  | <b>22nd</b>            | Havelock North PC ODE   |
|      | <b>December</b>  | <b>16th</b>            | <b>PARC Christmas Ribbon Day</b>  |

## After thought...

An out-of-towner accidentally drives his car into a deep ditch on the side of a country road. Luckily a farmer happened by with his big old horse named Benny. The man asked for help. The farmer said Benny could pull his car out. So he backed Benny up and hitched Benny to the man's car bumper. Then he yelled, "Pull, Nellie, pull." Benny didn't move. Then he yelled, "Come on, pull Ranger." Still, Benny didn't move. Then he yelled really loud, "Now pull, Fred, pull hard." Benny just stood. Then the farmer nonchalantly said, "Okay, Benny, pull." Benny pulled the car out of the ditch. The man was very appreciative but curious. He asked the farmer why he called his horse by the wrong name three times. The farmer said, "Oh, Benny is blind, and if he thought he was the only one pulling he wouldn't even try."



Visit Steed Health for all your herbal and stock feed needs. Now stocking the gorgeous EquineNZ sheepskin range of products.